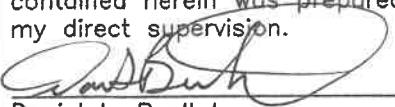


Corners to be Indexed

N1/4 CORNER 5-105-43
E1/4 CORNER 5-105-43
W1/4 CORNER 5-105-43
E1/4 CORNER 6-105-43
SW CORNER 5-105-43
NE CORNER 7-105-43

I hereby certify that this document and the data contained herein ~~was prepared~~ by me or under my direct supervision.


Daniel L. Bueltel

License No. 43844

4/30/2021
Date

JAN 24 2022

Karen Brown

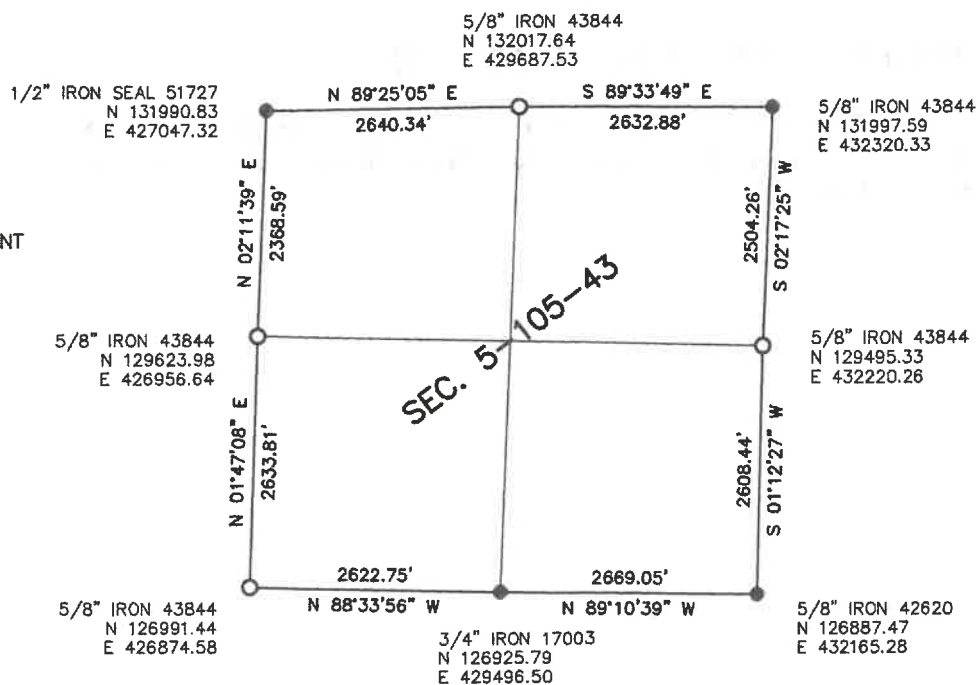
CERTIFICATE OF LOCATION OF GOVERNMENT CORNER

Land survey monuments situated in Section 5, Township 105, Range 43

STATE OF MINNESOTA, County of MURRAY



- FOUND MONUMENT
- SET MONUMENT



Murray County Coordinate System (1996)

STATEMENT OF EVIDENCE

N1/4 CORNER 5-105-43

On April 14, 2021, searched for corner and found old corner fence post at intersection of fence/occupation to north and east. it is within 4 feet of midway. Set 5/8" iron with seal 43844 at corner fence post

E1/4 CORNER 5-105-43

May 1905, James Woolstencroft, County Surveyor, did a survey of Section 4 and shows a stone and buggy spokes at corner

On April 14, 2021, searched for corner and found old corner fence post at intersection of well established fence/occupation to north, south, east, and west. Did not find stone and buggy spokes. Single proportionate would be north and east approximately 25 feet. Set 5/8" iron with seal 43844 at corner fence post.

W1/4 CORNER 5-105-43 (E1/4 COR. 6-105-43)

On April 14, 2021, searched for corner and found old corner fence post at intersection of well established fence/occupation to north, south, east, and west. it is within approximately 2 feet of single proportionate. Set 5/8" iron with seal 43844 at corner fence post.

SW CORNER 5-105-43 (NE 7-105-43)

On April 14, 2021, searched for corner and found old corner fence post at intersection of well established fence/occupation to north, south, east, and west. Set 5/8" iron with seal 43844 at corner fence post.